

**SANTINT**

**AD Series**



**Net Efficiency** 200-480ml/minX5

**Minimum Shot** 1/768Y (0.039ml)

Reliable simultaneous automatic dispenser, based on double piston pump, outstanding accuracy, and flexible configurations.



Item	Detail	Item	Detail
<b>Piston Type</b>	Double Piston Pump	<b>Minimum Shot</b>	1/768Y(0.039ml)
<b>Dispensing</b>	Simultaneous X 5	<b>Canisters</b>	Up to 32
<b>Flow Rate (Single Pump)</b>	P2-480 : 1200ml/min P2-350 : 875ml/min P2-200 : 500ml/min	<b>Canister Material</b>	POM/Stainless Steel
<b>Net Efficiency (Single Pump)</b>	P2-480 : 480ml/min P2-350 : 350ml/min P2-200 : 200ml/min	<b>Canister Volume</b>	2.5L/4.5L/12L
<b>Pump Capacity</b>	P2-480 : 190ml P2-350 : 117ml P2-200 : 67ml	<b>Tube Pressure Sensor</b>	Yes - Adjustable
<b>Can Table</b>	Automatic	<b>Humidifier</b>	Water Circulation / Automatic
<b>Dimension ( WXD XH )</b>	S : 1284x865x1245 M : 1694x865x1245 L : 2072x865x1245	<b>Power Supply</b>	220V/110V 50Hz/60Hz
<b>Power</b>	250W	<b>Certificates</b>	CE/cTUVus

## Double Piston Pump



- Big pump brings high speed, and small pump ensures high accuracy 1/768Y even for yellow oxide.
- 3 sizes:
  - P2-200 : 200ml/min; flow rate 500ml/min
  - P2-350 : 350ml/min; flow rate 875ml/min
  - P2-480 : 480ml/min; flow rate 1200ml/min



**P2-200**



**P2-350**



**P2-480**

## Double Piston Pump



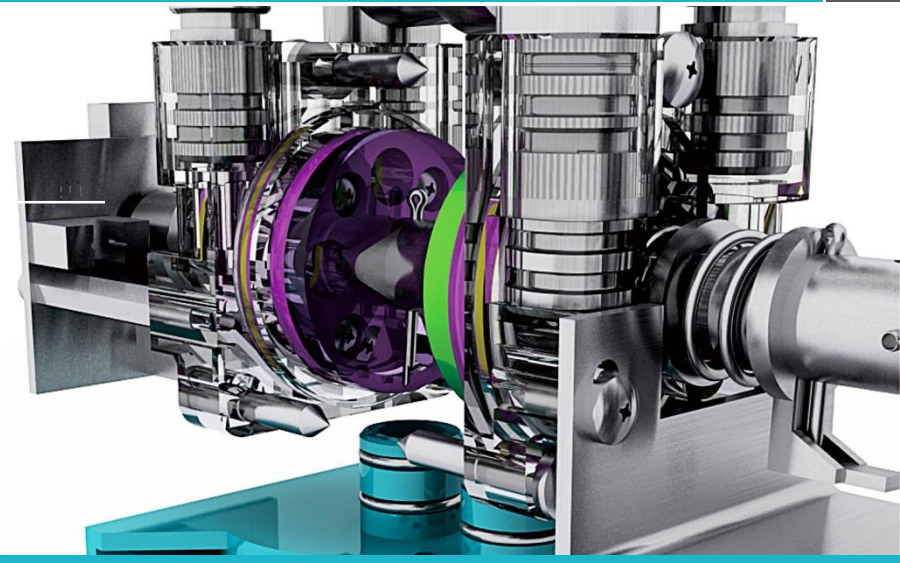
- Flexible configurations :
  - AD280=P2-200 plus P2-350
  - AD350=P2-350
  - AD420=P2-350 plus P2-480
  - AD480=P2-480
- Minimum shot of 1/768Y ensures higher accuracy and minimum mistint.



■ **CLICK TO PLAY**

## Double Ceramic Valve

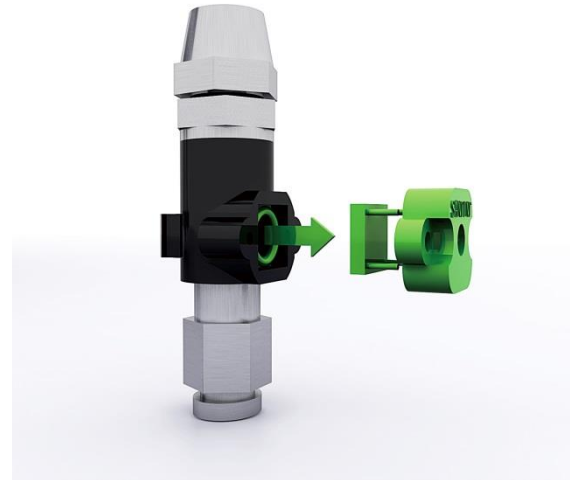
- Double ceramic valve, proven quality.
- Robust, reliable :10 years



## Tube Pressure Sensor



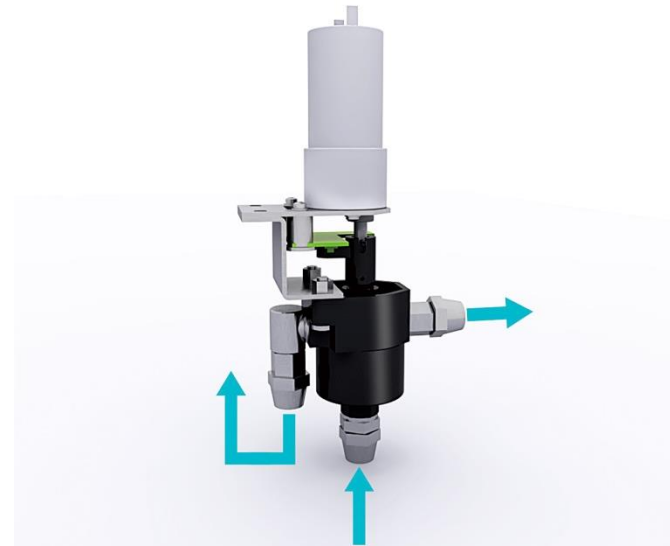
- Alarm when nozzles blocked;
- No tube explosion, longer durability ;
- Adjustable tube pressure sensor for various colorants.



## Recirculation



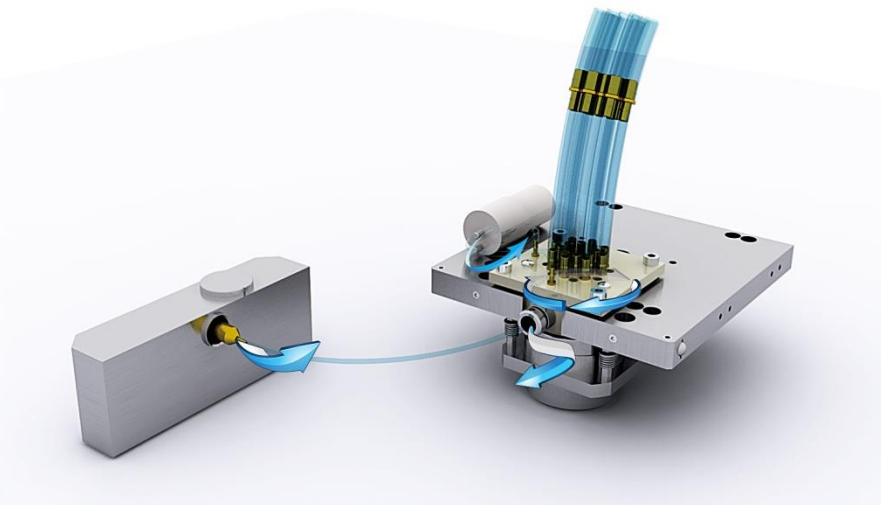
- Recirculation from the valve;
- No sedimentation, drying or block in tubes, minimizing malfunction.



## Water Humidifier



- Unique water circulation system and humidifying device;
- Seal the nozzle and keep the moisture.
- Minimizing nozzle blockage.
- Rotary nozzle, easy to clean.

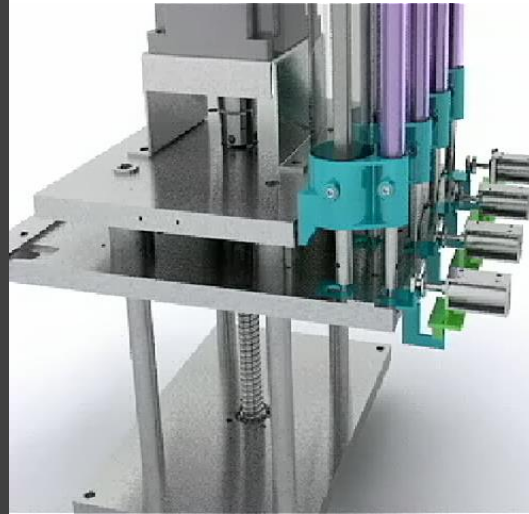




## Pump Selection System



- Unique Piston pump selection system;
- Only the selected pumps move, while non-selected don't;
- Extend the life-span of machine;
- Optional, and recommended for large volume of dispensing.



■ **CLICK TO PLAY**

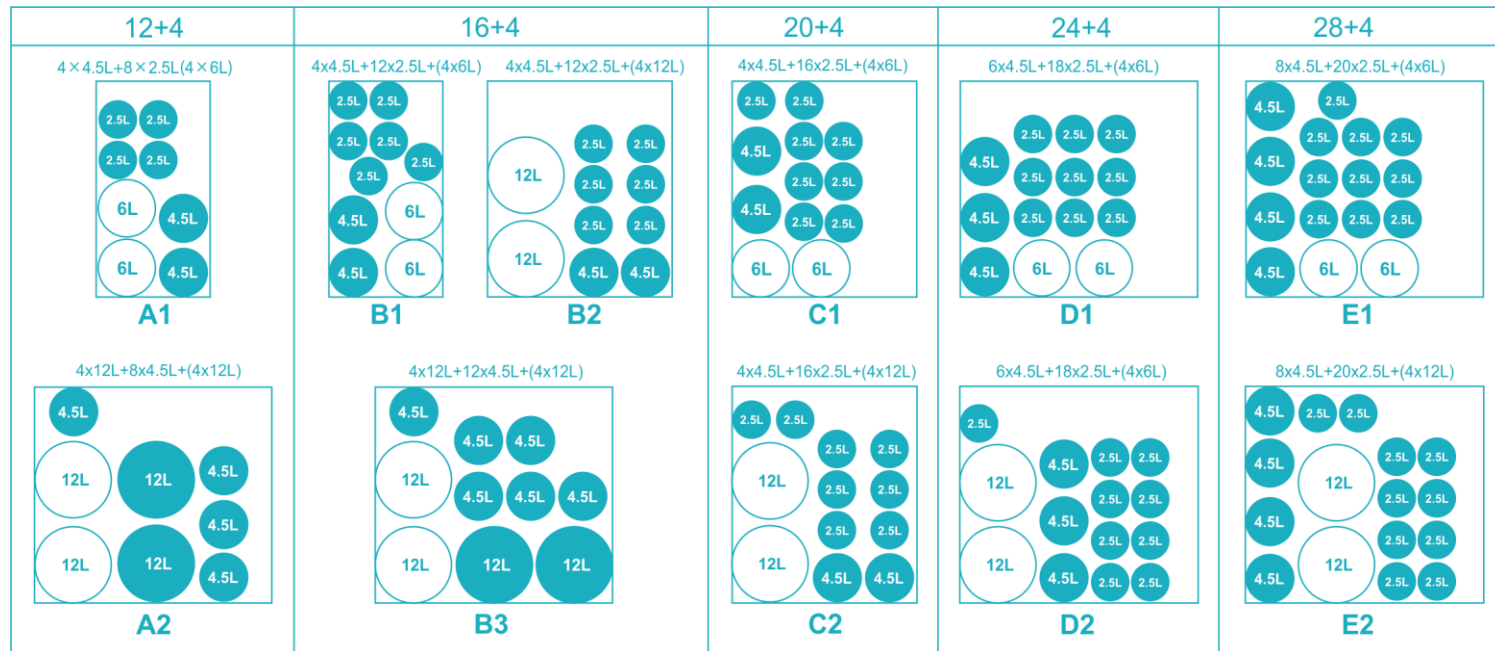
## Sample Paint Empty Can Tinting



- Simultaneous of 4 colorants and 1 base paint.
- Outstanding repeatability and accurate color for 250ml base paint.
- Best solution for Sample paints / testers



## Canisters Layout For SPECT



	12 Canisters	16 Canisters	20 Canisters	24 Canisters	28 Canisters	32 Canisters
AD280 AD350 (standard)	<p>4x4.5L+8x2.5L</p> <p><b>A</b></p>	<p>4x4.5L+12x2.5L</p> <p><b>B</b></p>	<p>6x4.5L+14x2.5L</p> <p><b>C</b></p>	<p>6x4.5L+18x2.5L</p> <p><b>D</b></p>	<p>8x4.5L+20x2.5L</p> <p><b>E</b></p>	<p>8x4.5L+24x2.5L</p> <p><b>F</b></p>
AD420 AD480 (STANDARD)	<p>4x12L+8x4.5L</p> <p><b>A1</b></p>	<p>4x12L+12x4.5L</p> <p><b>B1</b></p>	<p>4x12L+16x4.5L</p> <p><b>C1</b></p>	<p>6x12L+18x4.5L</p> <p><b>D1</b></p>	<p>8x4.5L+20x2.5L</p> <p><b>E1</b></p>	<p>8x4.5L+24x2.5L</p> <p><b>F1</b></p>

- 8 years' experience in dispensers;
- At least 5,500 sets in the market place;
- As a successor of A4 and AM200, AD has new design and proven quality.



## Robust & Reliable



- Sufficient testing and modifications before introducing to the market.

- More than 20 machines tested at customer factories and shops before formal purchasing.

- More than 40 companies are using Santint dispensers, e.g., Nippon, PPG, Sherwin, Valspar, etc

## AD280/350/420/480



- Flexible to configure the best option as required, for different volumes;
- 1/768Y high accuracy; high repeatability, suitable for more innovative colors/marketing approaches



- High Accuracy
- High Efficiency
- Tinting while filling

**SANTINT**

**AD**

**SANTINT • CHINA**

Address: Xushui Industrial Trade  
Park, Zhengzhou.  
Tel: +86 371 6785 7168

**SANTINT • POLAND**

Address: ul. Postepu 19. mag.5  
02-676 Warszawa Polska  
Email: [info@santint.com](mailto:info@santint.com)

**SANTINT • U.S.A**

Address: 2000 Bloomingdale Road, Suite  
220, Glendale Heights, IL 60139  
Tel: +1 847 350 6911

**SANTINT • AUSTRALIA**

Address: 2/4 Weddel Court  
Laverton North Victoria  
Email: [info@santint.com](mailto:info@santint.com)